

# 80,162 SF

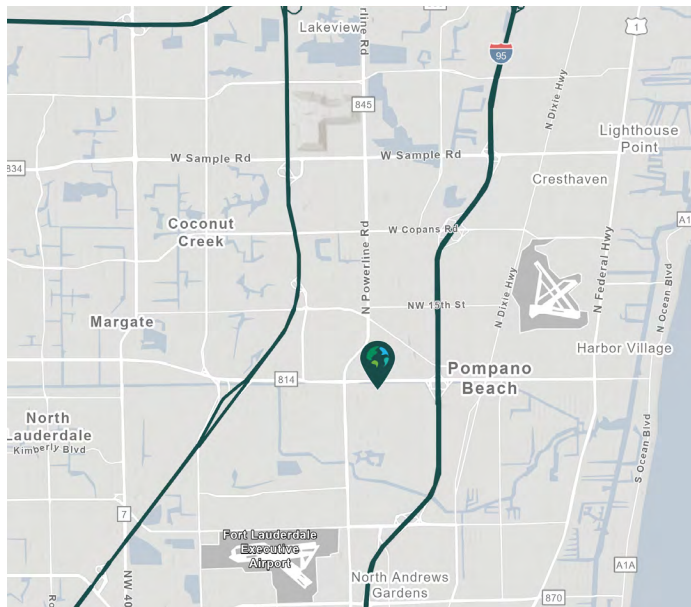
Industrial Space For Lease with Trailer Parking Available



## Prologis Atlantic Business Center 1200



2203 SW 3rd Street  
Pompano Beach, FL 33069 USA



### LOCATION

- Located in a historical business park in the heart of Pompano Beach
- Between Interstate 95 & Florida's Turnpike
- Access via Atlantic Blvd & Powerline Rd

### FACILITY

- Up to two spaces totaling 80,162 SF
- Trailer parking available - 38 spaces
- 2,573 SF & 3,249 SF spec offices
- 74,340 SF warehouse
- 32' clear height
- 209' deep
- 176' shared truck court
- 17 dock high doors and 3 ramps; 17 pit levelers
- ESFR sprinkler system
- 1.2:1000 car parking
- Available 1/1/2025

### ADVANTAGES AND AMENITIES

- Class A Building
- [Prologis Clear Lease®](#) - Know your lease expenses and capital cost with greater certainty before your sign.



Scan the QR code for more info!

**Your single-source service for efficient move-in and operations: [prologisessentials.com](https://www.prologisessentials.com)**

# 80,162 SF

Industrial Space For Lease with Trailer Parking Available



## Prologis Atlantic Business Center 1200

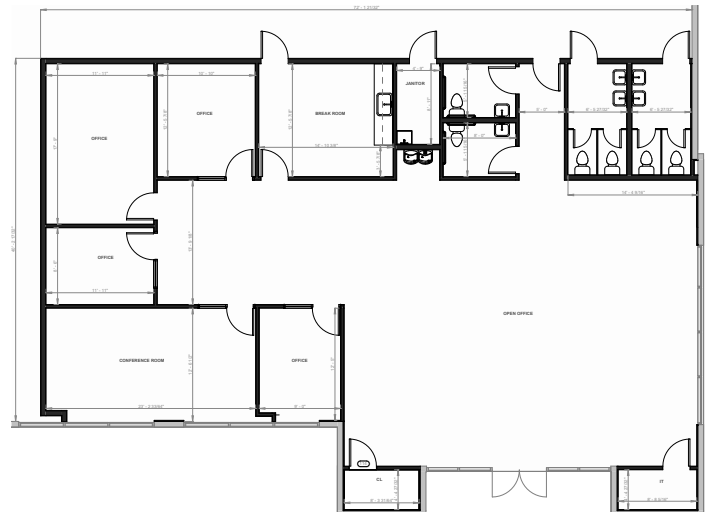
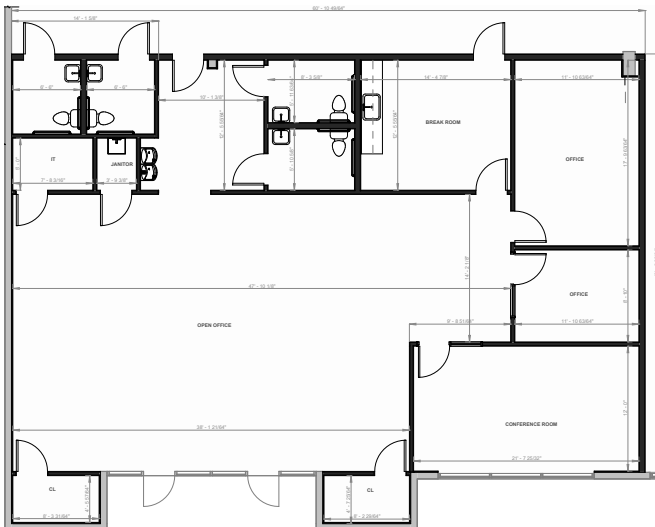
### SITE PLAN



Available Leased

### WEST OFFICE SPACE - 2,573 SF

### EAST OFFICE SPACE - 3,249 SF



# 80,162 SF

Industrial Space For Lease with Trailer Parking Available



## Prologis Atlantic Business Center 1200



**JLL**  
Peter Sheridan  
peter.sheridan@jll.com  
cell +1 954 439 4941  
401 E. Las Olas Boulevard  
Suite 1850  
Fort Lauderdale, FL 33301 USA

**JLL**  
Yuri Quispe  
yuri.quispe@jll.com  
cell +1 772 201 5305  
401 E. Las Olas Boulevard  
Suite 1850  
Fort Lauderdale, FL 33301 USA

**JLL**  
Peter Johnston  
peter.johnston@jll.com  
cell +1 954 980 3224  
401 E. Las Olas Boulevard  
Suite 1850  
Fort Lauderdale, FL 33301 USA

**Prologis**  
Jonathan Guffey  
jguffey@prologis.com  
ph +1 954 316 1762  
201 E. Las Olas Boulevard  
Suite 1550  
Fort Lauderdale, FL 33301 USA